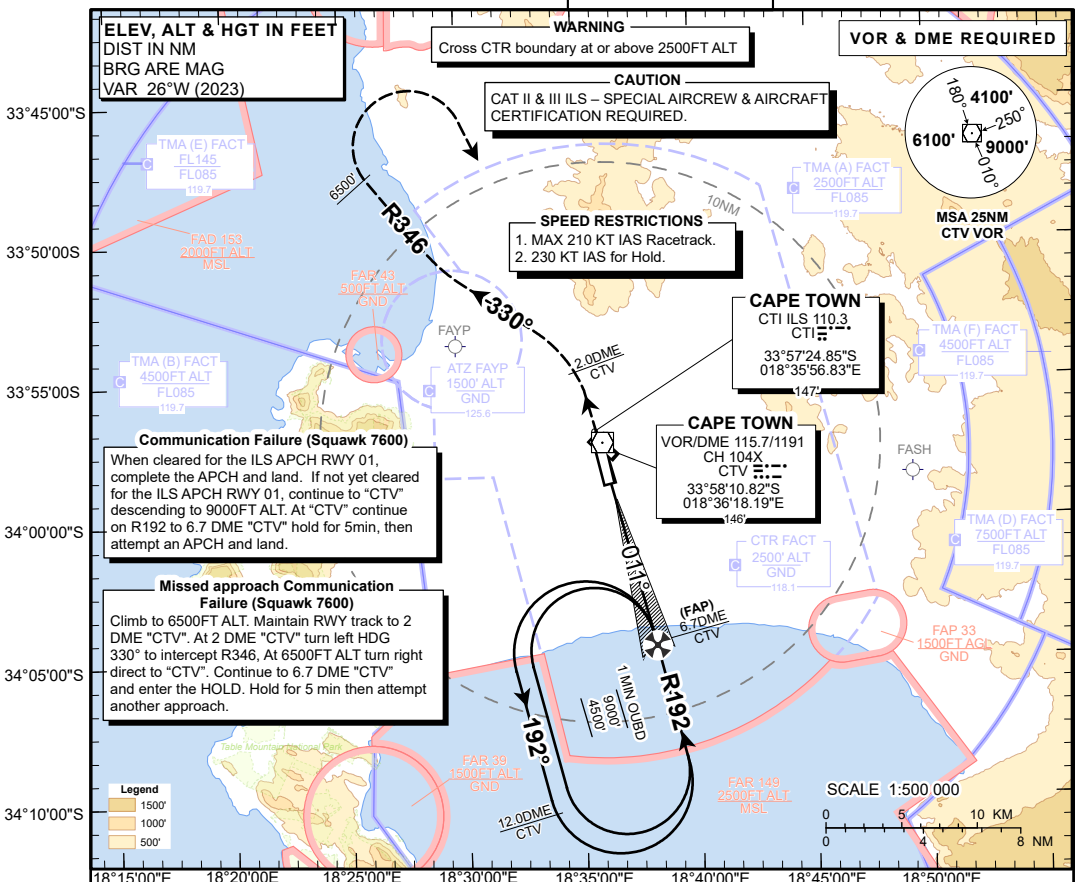


INSTRUMENT APPROACH CHART **AERODROME ELEV 151'**
HEIGHTS RELATED TO THR RWY 01 - ELEV 144'

APP: 119.70
 TWR: 118.10
 ATIS: 127.00
 SMC: 121.90

CAPE TOWN INTL ILS RWY 01
CAT A - D



Communication Failure (Squawk 7600)
 When cleared for the ILS APCH RWY 01, complete the APCH and land. If not yet cleared for the ILS APCH RWY 01, continue to "CTV" descending to 9000FT ALT. At "CTV" continue on R192 to 6.7 DME "CTV" hold for 5min, then attempt an APCH and land.

Missed approach Communication Failure (Squawk 7600)
 Climb to 6500FT ALT. Maintain RWY track to 2 DME "CTV". At 2 DME "CTV" turn left HDG 330° to intercept R346. At 6500FT ALT turn right direct to "CTV". Continue to 6.7 DME "CTV" and enter the HOLD. Hold for 5 min then attempt another approach.

Legend

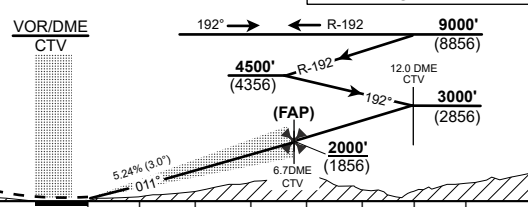
1500'
1000'
500'

CTV DME	5	4	3	2
ADVISORY ALT(HGT)	1448(1304)	1129(985)	811(667)	492(348)

INA ALT: 4500' or higher MSA

TRANSITION ALT 7500'
TRANSITION LEVEL ATC

MISSED APPROACH:
 Climb to 6500FT ALT. Track RWY HDG to 2 DME "CTV". At 2 DME "CTV" turn left HDG 330° to intercept R346. At 6500FT ALT turn right direct to "CTV". Continue to 6.7 DME "CTV" and enter the HOLD or as directed by ATC.



ILS RDH 60'

THR ELEV 144'
 NM to/from THR RWY 01

Straight-in Approach	OCA/H	A	B	C	D	GS	KT	80	100	120	140	160
	With 2.5% Missed APCH Gradient	CAT I	514(370)	524(380)	534(390)	546(402)	FAP to THR	MS	4:14	3:23	2:49	2:25
	CAT II	459(315)	468(324)	479(335)	493(349)	Rate of descent	FPM	425	531	637	743	850
With 3.0% Missed APCH Gradient	CAT I	344(200)				NOTE:						
	CAT II	244(100)	244(100)	245(101)	260(116)	1. Nil Circling.						
	CAT III B	DA(H)				2. CAT-II and CAT-III B operations and minima must be approved by SACAA.						
						3. 1 MIN left hand Hold and 1.5 MIN left hand Racetrack.						
						4. WGS-84.						

CHANGE: Hold and Racecourse.

ACSP-ATNS